

BWP News



Bridgewater Park
Primary School
GROWING AND LEARNING TOGETHER

Newsletter 5 - January 2025

Happy New Year

Dear Parents and Carers,

Happy New Year! We hope you had a wonderful and enjoyable Christmas break. As we step into this new year, we are excited about all the fantastic activities and learning opportunities we have planned for our students.

We would like to extend our heartfelt thanks to you for your continued support in our drive to improve attendance. The more our pupils are present, the more they learn, which significantly enhances their educational experience.

A quick reminder about our upcoming trip to Chester Zoo: please ensure you have returned your reply slips to the school office.

Thank you once again for your support, and we look forward to a successful and enriching year ahead!

Warm regards,
Mrs A Hudson
Head of School



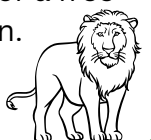
Chester Zoo Partnership

As part of our commitment to providing enriching experiences, we have decided to participate in one of Chester Zoo's fantastic free outreach programmes. By being part of one of their projects, our school has the opportunity to take part in a series of workshops run by the Conservation Education team and this will take place in school for pupils' year 1-6.

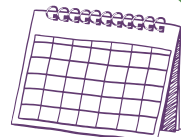
At Chester Zoo, they are passionate about conservation and want to get as many people as possible learning about the natural world and taking action for wildlife. So far, over 10,000 students have taken part in their hugely successful repeat engagement projects, and we would love our pupils to be part of this too. Bridgewater Park pupils from year 1-6 will take part in three workshops based on Wildlife Connections – a project linked to protecting and creating safe spaces for our native local wildlife. This is a wonderful opportunity for children to learn about wildlife, conservation, and the incredible work being done to protect endangered species.

Because our school is participating in the workshops, Chester Zoo has generously selected us for a free trip to their zoo. We believe this trip will be both educational and memorable for all the children.

Miss Clark



Dates for the Diary



- Wednesday 8th January - Y5/6 Fire Service Smoke Tent Experience
- Tuesday 14th January - Y5 Red Cross First Aid Training Session
- Wednesday 15th January - Y1-Y6 Chester Zoo Trip
- Thursday 16th January - Y3/4 Parents 'Sleep & Screens' workshop in hall 2-3pm
- Friday 17th January - Chester Zoo Workshop 1 for Y1-6
- Tuesday 21st January - Y3/4 Liverpool World Museum Trip
- Friday 24th January - Chester Zoo Workshop 2 for Y1-6
- Tuesday 28th January - Parents' Evening 3:30-5pm
- Wednesday 29th January - Parents' Evening 3:30-5pm
- Friday 31st January - Chester Zoo Workshop 3 for Y1-6

School Values



Kindness - Integrity - Tenacity

As we start a new year and term, we would like to remind our BWP families about our core values: kindness, integrity and tenacity.

The staff at BWP are always modelling these values and looking out for children who are displaying them in and out of school. During celebration assembly, we celebrate our values award winners and we are excited to see who is going to earn our values awards this term!

Early Years Open Evening



3 and 4 year old nursery spaces available

Monday 20th January at 3:45pm

Come and visit our school and see us in action!

Here at Bridgewater Park we are committed to providing quality early years in a stimulating environment.

- **Forest school**
- **30 hour nursery**

Birthday Shout Out!

January:

- 4th - Curtis G (Y4)
- 15th - Thomas M (Y3)
- 16th - Holly G (Y1)
- 21st - Jackson P (EY)
- 25th - Maggie B (Y2)
- 25th - Noah LC (Y5)
- 31st - Kaiden LS (Y1)



SEN Support

Graduated Response

SEND is all about gathering evidence, so we follow something called the Graduated Response.

Universal Offer - this is the stage where a child receives the same as other children and does not need any additional support. At this stage, teachers or parents may note a concern and monitor this. Teachers may begin to make some small adaptations

Targeted Support - After small adaptations, if there are no improvements, a teacher will complete a pupil causing concern form and submit this to me as SENDCo. Further suggestions and adaptations are made at this stage.

SEN Support - Despite further adaptations, if progress is still limited, a pupil will be added to the SEND register and will have a SEN Plan (with targets) and Pupil Passport which outline all of the adjustments needed.

SEND Support with External - At this stage, we may look to get further professionals involved such as Educational Psychologists
EHCP - After following all of the above, if collectively, we feel that a child still needs further support in school, an EHCP (Education, Health and Care Plan) will be applied for.

More information can be found on Halton's Local Offer:
<https://localoffer.haltonchildrenstrust.co.uk/>